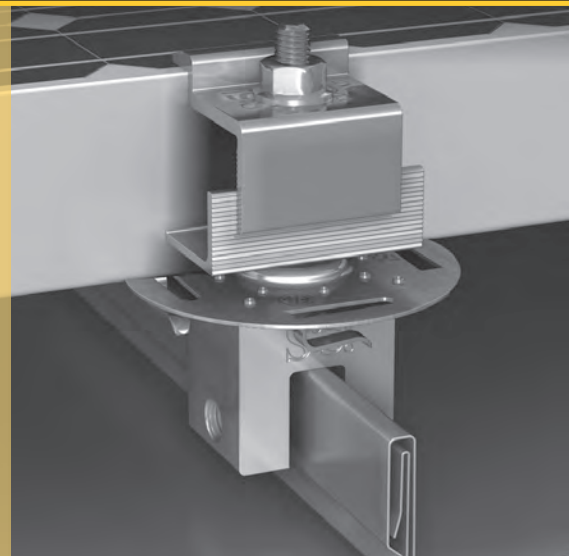


S-5!®
The Right Way!



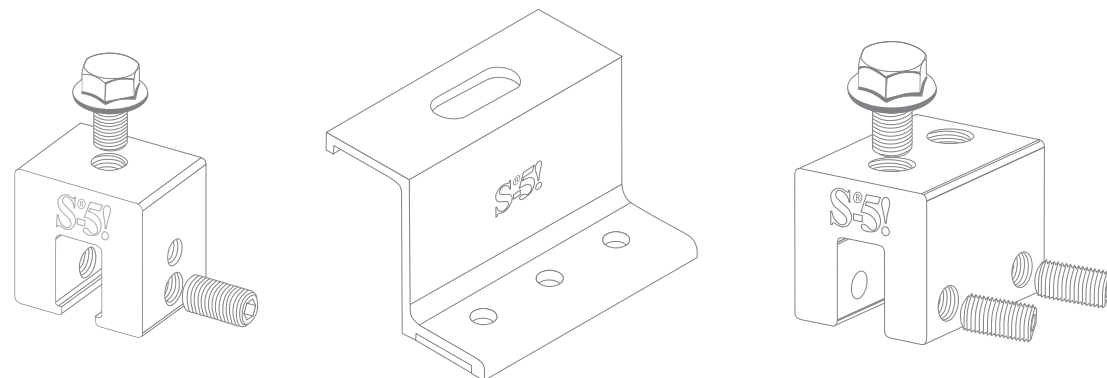
Attachment Solutions & Products

www.S-5.com | 888-825-3432



S-5!® Attachment Products

Utility Attachments and Applications



Attaching rooftop ancillary items has always been difficult and often the source of leaks and maintenance problems until S-5!®. Thanks to our patented round-point setscrews, S-5! clamps will not pierce the metal roof paneling, nor violate roof manufacturer warranties!

Metal standing seam systems represent the “state-of-the-art” in roofing alternatives today, offering service life and dependability measured in decades. S-5! clamps complement these roofs by providing a dependable way to attach things without jeopardizing the integrity of the roof.

Our broad line of aluminum and brass attachment products are extremely versatile, fitting most standing seam and exposed-fastened metal roof profiles, including most structural and architectural profiles.

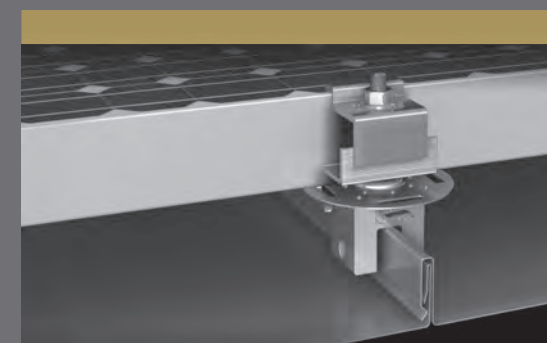
Our clamps and brackets have been laboratory tested on a variety of seam types, profiles, and materials to determine ultimate tensile failure loads. These test results are available on our site www.S-5.com or through your S-5! distributor.

Their versatile, simple design and ample size make the standard-sized S-5! clamps so strong they are perfect for snow retention products and all other heavy-duty applications.

S-5! mini clamps also have incredible holding strength, providing exceptional value and performance for medium-duty applications. Having one setscrew rather than two, the mini clamps are the right choice for attaching all kinds of rooftop accessories.

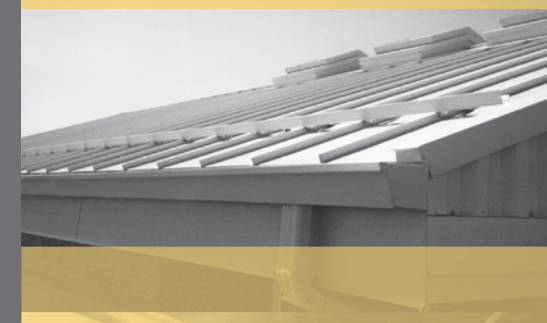
S-5!® Systems

S-5!® clamps and brackets are extraordinarily versatile and allow you to attach almost anything to standing seam, exposed-fastened, and corrugated metal roof profiles.



S-5-PV Kit Solar Attachment

Around the globe, the concept of combining photovoltaic arrays with standing seam metal roofing is growing – and for good reasons. A standing seam metal roof has a life expectancy consistent with that of PV modules. A 30-year power source on a 40-year roof, along with S-5!'s zero-penetration technology, creates the most sustainable roof system available coupled with alternative power generation!



ColorGard® Snow Retention

ColorGard® is the most reliable snow retention system on the market, and we have the warranty to prove it! In addition to the free 25-year warranty on parts, ColorGard is the only system that offers an optional lifetime warranty* against system failure. ColorGard maintains unsurpassed holding strength and a lower installed cost than any other engineered system on the market. And unlike other snow retention systems, ColorGard utilizes a strip of the actual roof material to ensure perfect color match for the life of the roof.*

* See Optional Limited Lifetime System Warranty information, check out our ColorGard Calculator, view load test results, and more at www.S-5.com.



SnoRail™ and SnoFence™

SnoRail™ and SnoFence™ can dramatically reduce the risks associated with rooftop avalanches, while maintaining the clean lines of the roof. Whether aluminum or brass, the SnoRail and SnoFence systems offer a sleek, stylish design and can be engineered on a site-specific basis.



Countless Applications

Attach Almost Anything to Metal Roofs!

Attach solar panels, snow retention and wind performance systems, signs, banners, light fixtures, gas piping, stack and flue bracing, antennas, roof walkways, HVAC equipment, fascias, lightning protection systems, equipment screens, conduit, condensate lines, and more – all without violating the integrity of the roof or the roof manufacturer's warranty!

Wind Protection and Performance Systems

S-5!® WindClamps™ are designed to increase roof system wind uplift performance. WindClamps can double wind resistance by preventing multiple modes of failure. In fact, WindClamps have proven to be a necessity in some regions, preserving rooftops in the midst of hurricane weather.

Satellite Dishes

Satellite dishes and antennas can be installed securely, quickly, and easily without penetrating the roofing material with our S-5! mini clamps.

Signs and Banners

With S-5! clamps, signs and banners are securely mounted with no holes in the roof panels, no leaks, and no problem when the next tenant moves in. Temporary advertising and information banners are easily installed and subsequently removed without damage to the panels and without violating the roof warranty.

Pipes and Conduits

Piping, electrical conduits, condensate lines, and equipment can now be mounted to metal roofs. S-5! clamps offer the perfect attachment solution without unsightly and corrosive wood blocking, harsh and messy sealants, or warranty-voiding holes.

HVAC and Rooftop Equipment

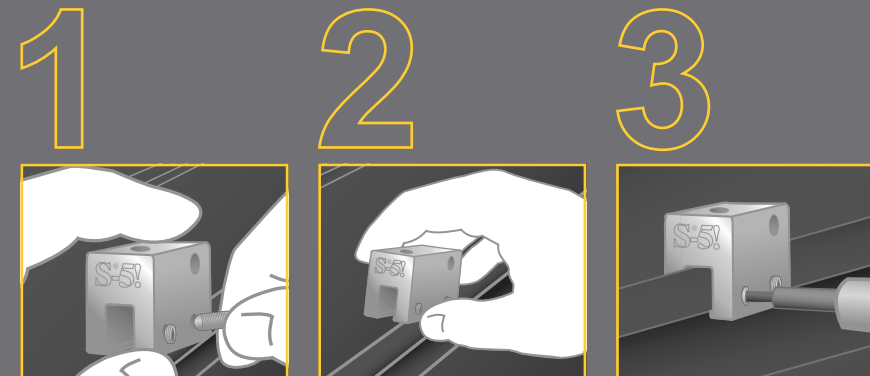
S-5! clamps allow HVAC, ductwork, and rooftop equipment to be mounted to metal roofs without piercing the roof panels, while still ensuring proper drainage of moisture and debris. Usual mounting methods, such as wood blocking, voids roof warranties by trapping moisture against the panel surface. Use of S-5! clamps ensures equipment will not migrate from its intended location, will not obstruct drainage, and can operate efficiently without violating the roof warranty.

And Everything Else...

Roof walkways, lightning protection, light fixtures, fascias, downspouts, and dormers — even holiday and rooftop lighting can all be durably and cost-effectively mounted. Safely and easily attach almost anything to metal roofs, permanently or temporarily, with S-5! attachment solutions.

The S-5!® Family of Products

Installation is Easy

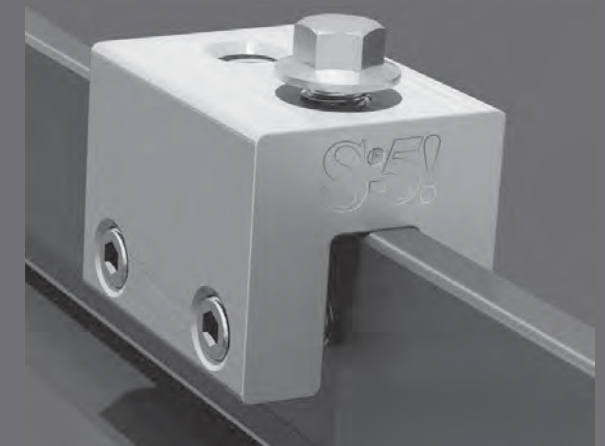


The S-5!® family of clamps attach to the panel seam by inserting and tightening one setscrew for mini clamps or two setscrews for standard-sized clamps. These setscrews will slightly dimple the seam material, but they will not pierce it, nor penetrate the roof membrane. This provides a sound mechanical attachment that will not deteriorate with age.

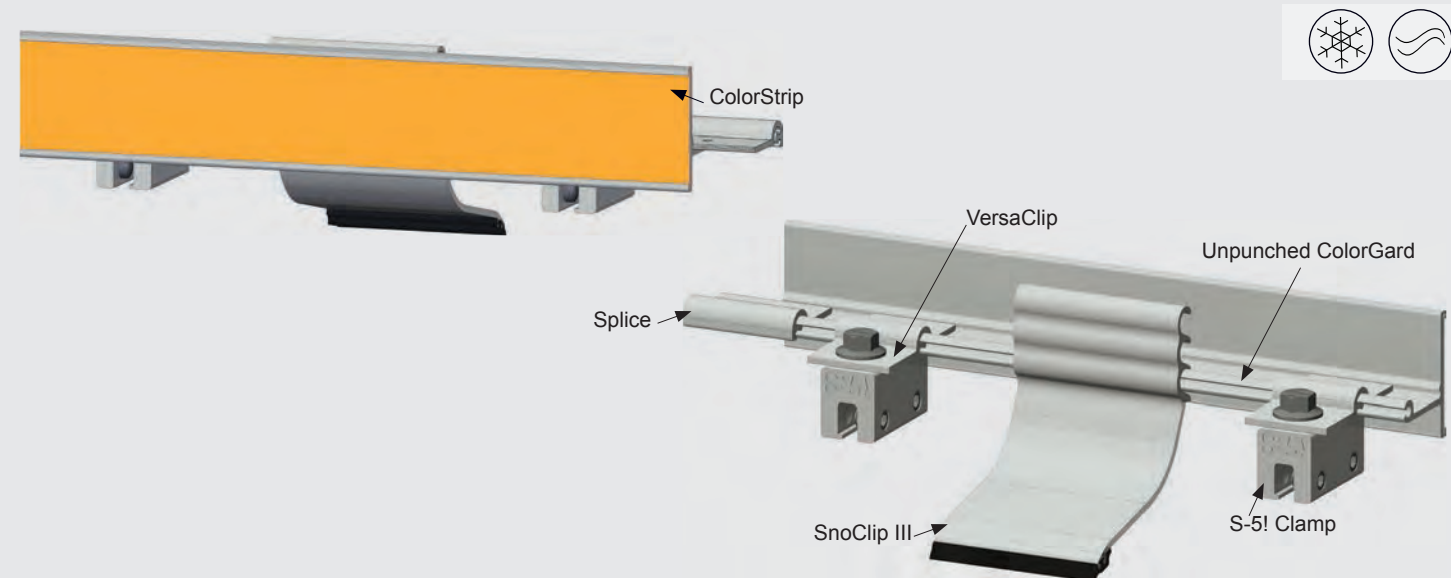
Go to www.S-5.com/tools for complete installation instructions, information, and tools available for properly attaching and tensioning S-5! clamps.

Our patented clamps offer durability and reliability unequaled by adhesives that degrade over time with heat cycles, UV radiation, and ozone. Don't be misled — one size does not fit all roofs! Each clamp style has been independently laboratory tested on a variety of seam types, profiles, and materials to determine ultimate tensile failure loads parallel and perpendicular to the panel seam. These test results are available at www.S-5.com.

S-5! clamps are designed to have maximum holding strength, while maintaining the roof's weather-tightness and preserving the roof manufacturer's warranty!



S-5![®] Snow Retention Systems

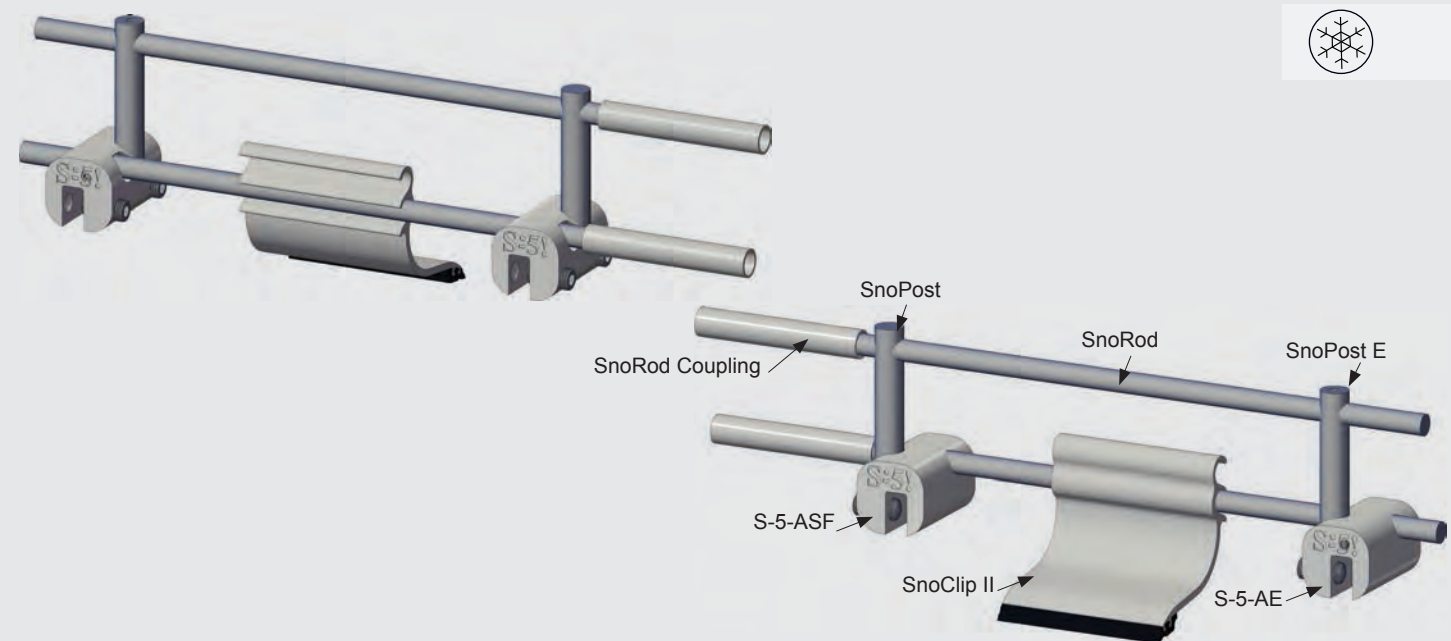


ColorGuard[®]

Designed on a site-specific basis, ColorGuard[®] controls snow migration while maintaining the clean colorful appearance of the roof with perfect color and finish matching. ColorGuard is the only snow retention system that can be guaranteed for total system performance and exact color match for the life of the roof!* ColorGuard's penetration-free clamp attachment technology preserves the roof manufacturer's warranty.

*See Optional Limited Lifetime System Warranty information, check out our ColorGuard Calculator, view load test results and more at www.S-5.com.

Components sold separately

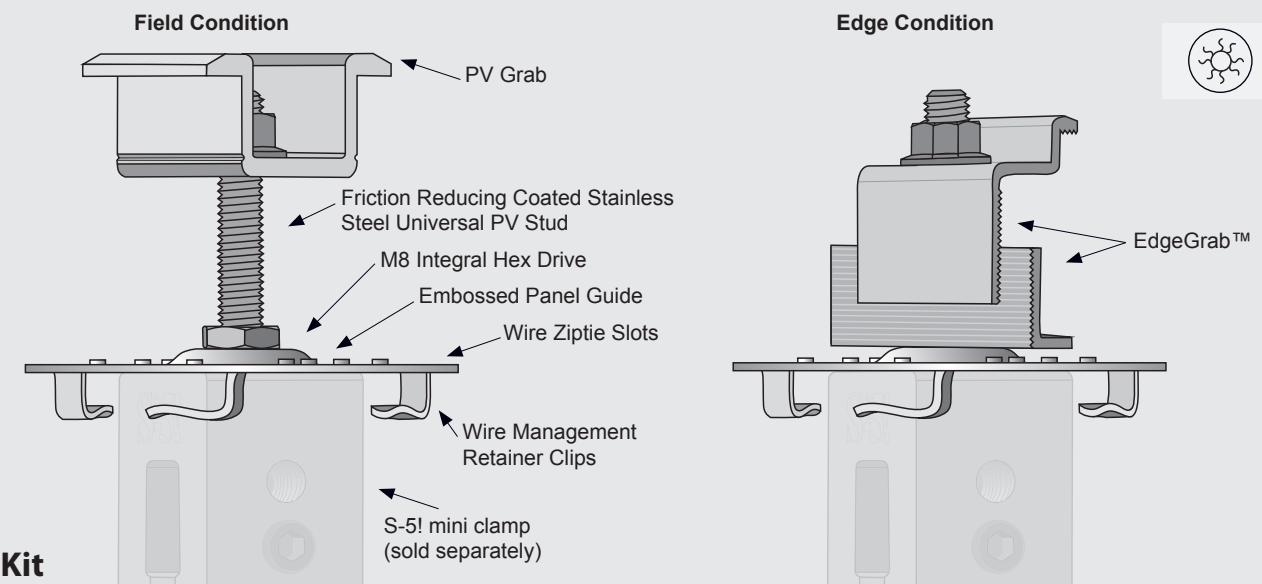


SnoRail[™] and SnoFence[™]

Architects and roof designers agree; the clean lines, cylindrical shapes, and high-tech look of our SnoRail[™] and SnoFence[™] systems present attractive functionality without cluttering the lines of standing seam metal roofs. Systems are available in aluminum for common roof material types, as well as brass for use on copper standing seam roofs.

Components sold separately

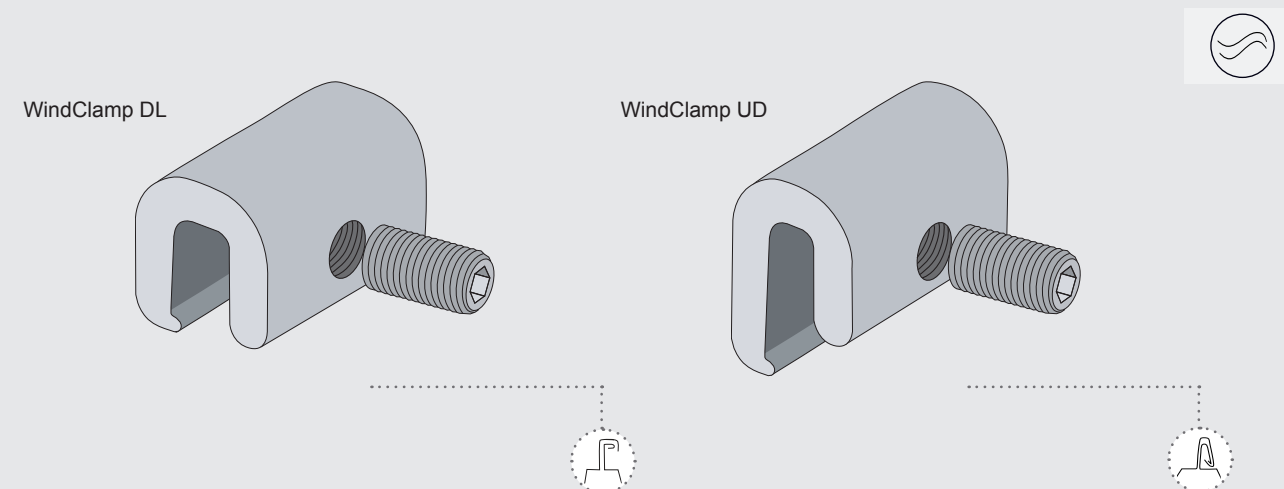
S-5![®] Solar Attachment



S-5-PV Kit

The S-5-PV Kit features a groundbreaking stainless steel mounting disk with twelve nodes designed to ensure the module-to-module conductivity of anodized aluminum module frames. This means it automatically provides a ground path in the module frame. No lugs or wire required except to connect one string of modules to another and to ground the system. The new S-5-PV Kit is one of the first solar module mounting solutions in the industry to be listed to the new UL subject 2703, a standard that covers both bonding and mounting. Furthermore, the S-5-PV Kit has gained an ETL Listing to UL 1703.

S-5![®] Wind Solution



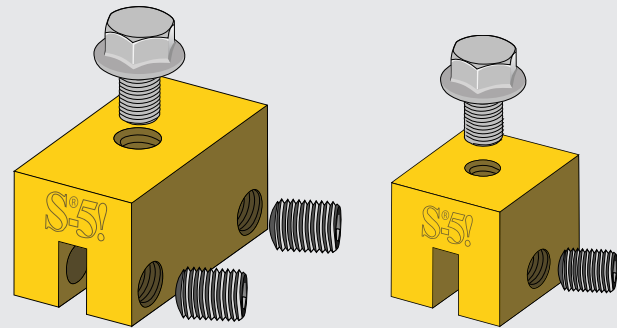
WindClamp[™] DL and WindClamp[™] UD

As wind buffets the walls of a building, it is redirected up and over the roof, creating uplift. Wind uplift can be quite dramatic, threatening to tear a metal roof from its mounting. The frequency and strength of the panel attachment, therefore, can be vital to roof survival during a windstorm. Likelihood of failure can be reduced with the use of external seam reinforcement, such as the patented S-5! WindClamps[™].

For very low cost, S-5! WindClamps increase, and often double, wind resistance, preventing multiple modes of failure, including clip disengagement (when used at a clip location).

S-5![®] Clamps

S-5![®] Clamps

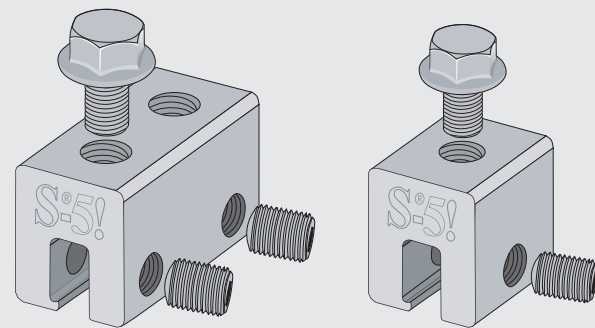


Mini



S-5-B

The S-5-B clamp allows architects to maintain the beautiful appearance of their copper roofing. The brass clamp fits either traditional standing or batten seams.

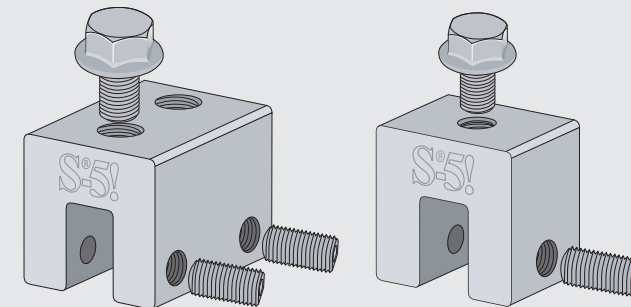


Mini



S-5-E

The S-5-E is designed specifically for double-folded standing seam roofs that are so popular in Europe (and in the U.S.). The S-5-E is a bit smaller and less expensive than the S-5-U, but every bit as strong. It also fits Butler's MR-24®.

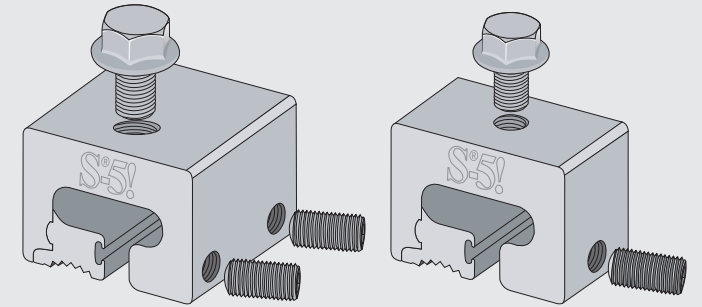


Mini



S-5-S

The S-5-S clamp is an extraordinarily versatile clamp. It was created for popular snap-together profiles — including residential profiles such as Taylor Metal's Easy Lock™ Standing Seam and the Firestone UC4. The S-5-S or S-5-S Mini can be used on horizontal seams under .540 inches to avoid field crimping the seam.

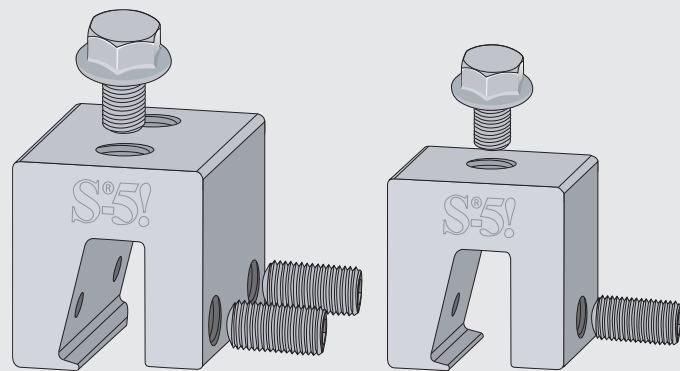


Mini



S-5-T

The S-5-T was specially developed to fit certain profiles having a T-shaped seam configuration. Its two-piece design allows it to be easily installed anywhere along the length of the panel seam, and also works on architectural "angle-seam" or "single-folded" paneling.

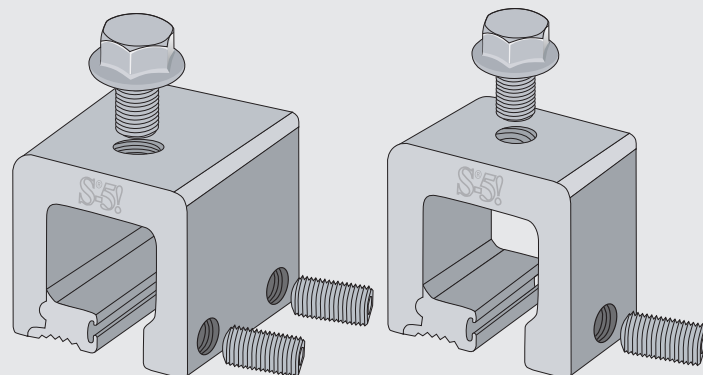


Mini



S-5-N

The S-5-N clamp was designed for application on popular 1" nail strip metal roof profiles. The clamp design minimizes the need to field crimp, engages the female part of the triangular seam, sits straighter on the seam, and eliminates the need to hold the clamp in place while setscrews are tensioned.

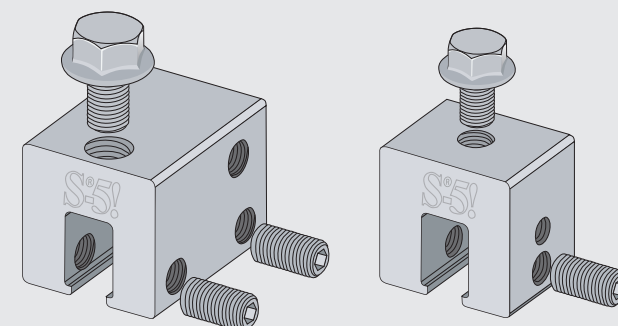


Mini



S-5-Q

The S-5-Q clamp was developed to accommodate metal roof panels having a large, round "bulb" seam configuration up to 29 mm. It will also fit smaller bulb-shaped profiles that were not seamed correctly, allowing the seam to be utilized without modification.

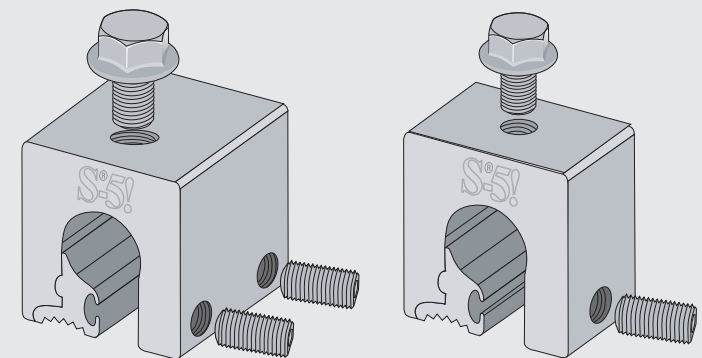


Mini



S-5-U

The S-5-U is by far our most popular and versatile clamp. It fits about 85% of the standing seam profiles manufactured in North America — including most structural and many popular architectural profiles. The S-5-U can be used on vertically oriented seams and, by rotating the clamp 90°, it can also be used on most horizontal 2" seam profiles.



Mini

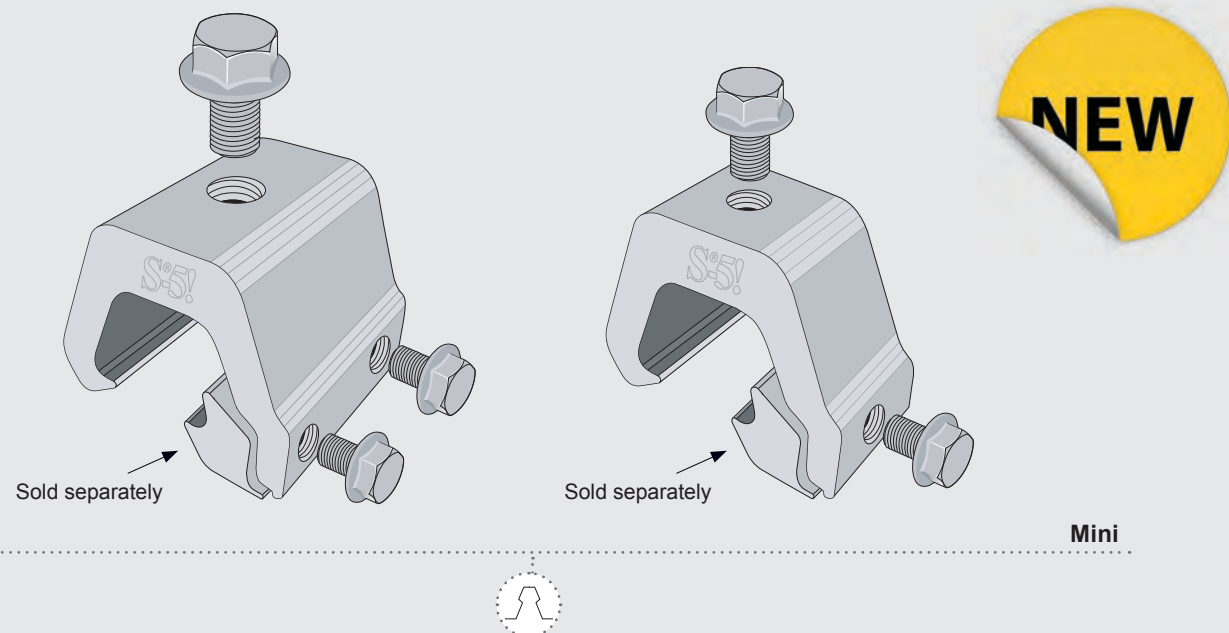


S-5-Z

The S-5-Z clamp is specially designed to fit Zip-Rib®, Kalzip®, and similar profiles that have a round "bulb" seam configuration. Its two-piece clamp design allows it to be easily installed anywhere along the length of the rib.

S-5![®] Clamps

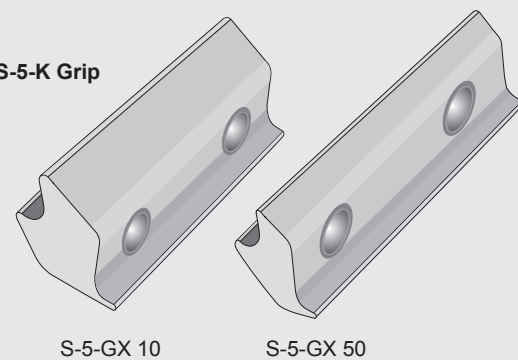
S-5![®] Brackets



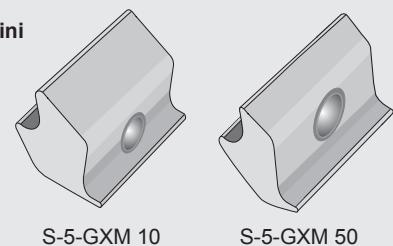
S-5-K Grip

The S-5-K Grip™ clamp was specifically developed to fit Klip-Rib® and other bulb snap-together seams. The design utilizes multiple inserts (sold separately; see below) in order to accommodate a variety of bulb snap-together profiles. The S-5-K Grip eliminates the large moment arm other attachment products use for these profiles.

Inserts for the S-5-K Grip

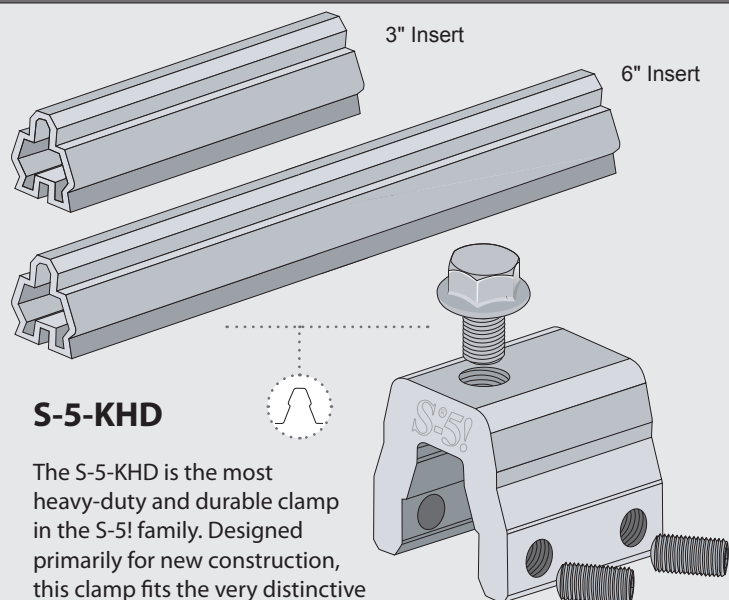


Inserts for the S-5-K Grip Mini



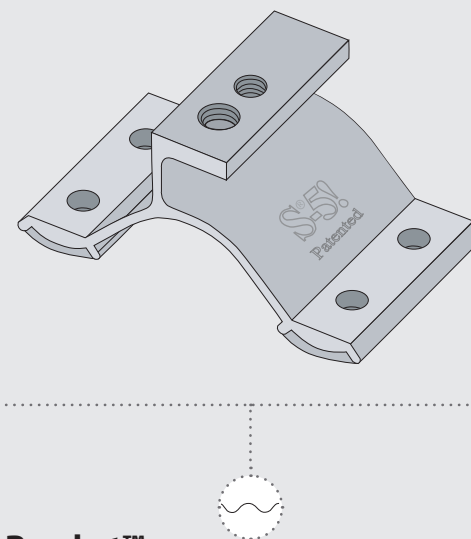
S-5-K Grip Inserts

Each S-5-K Grip insert has a unique shape that allows for a tight fit and provides increased holding strength over other attachment options. S-5-K Grip inserts are sold separately from S-5-K Grip clamps.



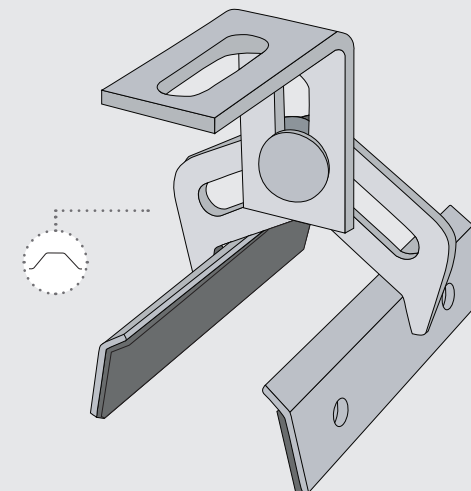
S-5-KHD

The S-5-KHD is the most heavy-duty and durable clamp in the S-5! family. Designed primarily for new construction, this clamp fits the very distinctive profiles of the Lysaght 406®, McElroy Mirage, Metal Sales Clip Loc, and AEP-SPAN Klip-Rib®. This clamp features an insert that is placed on the intermediate rib for extra hold. Significantly stronger than anything else on the market for these profile types, this clamp is geared for snow retention systems and other heavy-duty applications in new construction where holding strength is critical. Retrofit insert also available.



CorruBracket™

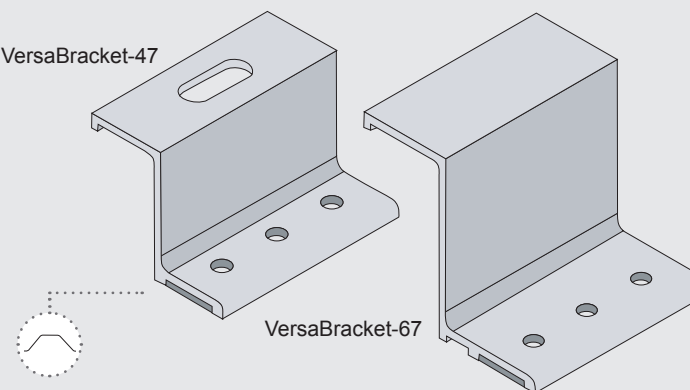
The S-5!® CorruBracket™ can be used to mount almost anything to corrugated metal roofing. CorruBracket is compatible with 7/8" and 3/4" U.S. corrugated profiles. No messy sealants to apply! No chance for leaks! The CorruBracket comes with factory-applied butyl sealant already in the base, and the S-5! patented reservoir conceals the sealant from UV exposure, preventing UV degradation.



ProteaBracket™

ProteaBracket™ is the most versatile standing seam metal roof attachment solution on the market, fitting most trapezoidal sheet profiles with and without intermediate insulation. It features an adjustable attachment base and multiple solar module attachment options to accommodate varying widths and heights. There are no messy sealants to apply and no chance for leaks; the ProteaBracket comes with factory-applied, adhesive rubber sealant to ensure quick installation and a weather-proof fit.

VersaBracket-47



VersaBracket-47™ and VersaBracket-67™

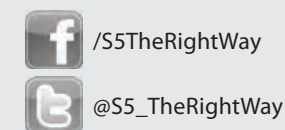
To accommodate various rib heights, VersaBracket™ comes in two heights. VersaBracket can be used to mount almost anything to an exposed-fastened roof system and is compatible with almost any trapezoidal exposed-fastened profile. No messy sealants to apply! No chance for leaks! The VersaBracket comes with factory-applied butyl sealant already in the base, and the S-5! patented reservoir conceals the sealant from UV exposure, preventing UV degradation.

Learn more about S-5![®] products!

To read more about each product and view installation instructions, visit our website at www.S-5.com. You will find helpful videos, customer testimonials, distributor information and more.

Connect with us!

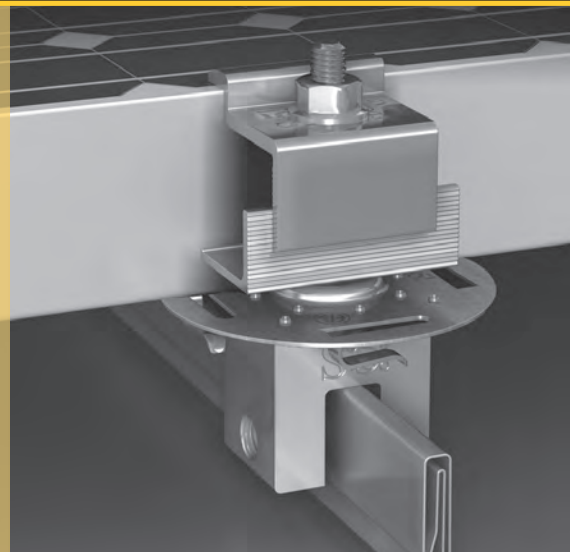
We would love to connect with you on social media. Stay up-to-date with our newest product launches and find out which tradeshow we'll be attending next!



S-5!®

The Right Way!

The Right Way to Attach Almost Anything to Metal Roofs!



www.S-5.com | 888-825-3432

S-5!® Warning! Please use this product responsibly!

Products are protected by multiple U.S. and foreign patents. Visit the website at www.S-5.com for complete information on patents and trademarks. Consult the S-5! website at www.S-5.com for published data regarding holding strength.

Copyright © 2013, Metal Roof Innovations, Ltd. S-5! products are patent protected.
S-5! aggressively protects its patents, trademarks, and copyrights. Version 081213.

Distributed by: